



# RE20

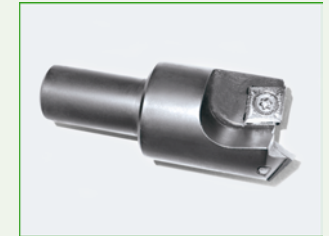
## CNC controlled tube end finishing machine



Tube clamp fixture



Sample



Tooling

### Technical details:

The RE 20 tube end finishing machine is available in a variety of configurations. Stand-alone manual operated, or as table-top (different working heights available) with table frame, top mounted machine control and under table top mounted power enclosure.

The machine is equipped with pneumatic or servo driven feed for maximum accuracy.

The machine can be easily integrated in fully automated systems.

Recommended tooling are standard carbide inserts (depending on application).

Micro lube system for maximum tool life (lube amount is adjustable from 20 to 50 ml/h).

Custom colors available

Machine can be equipped with industrial type vacuum system for optimized chip removal.

Standard equipped with safety guards

### Available options:

- Standard or carbide tool inserts
- Clamp jaws
- Automated feed systems
- Machine integration solutions
- Chip removal system
- Customer specific solutions

### Safety features:

- Safety guard

### Technical standard specifications:

Tube end finishing:	Deburring, facing, chamfering
Finishing methods available:	inside chamfering inside and outside chamfering inside, outside chamfering, face planning inside and outside calibration
Tooling total stroke length:	85 mm
Tooling work stroke length:	35 mm
Drill capacity max:	Ø 15.0 mm (steel 600 N/mm <sup>2</sup> )
Main motor:	0.75 kW @ 2900 rpm
Tool rpm:	fine adjustable with inverter, 1140 rpm @ 50 Hz
Tool style:	Standard, alternative carbide inserts
Tool adapter:	ER25 (max capacity 16 mm)
Tool OD:	max. 28 mm
Feed speed:	0 – max 300 mm/sec
Feed pressure:	max. 2100 N
T.I.R.:	max. 0.01 mm
Repeatability	+/- 0.01 mm (+/- .0003")
Power supply:	400V/ 3-phase 16A
Max. Collette Dia.	20 mm (.787")
Pneumatic:	6 – 8 bar, approx. 10 l/min
Dimensions (LxWxH):	approx. 940 x 730 x 1360 mm (2- step machine)
Weight:	approx. 150 kg/ 330 lbs (+ 70Kg/ 155 lbs for ind. vacuum)

### Rosenberger Aktiengesellschaft

Am Häuslerain 16, D-79263 Simonswald

Telefon: +49(0)7683-91900-0, Telefax: +49(0)7683-91900-29

E-mail: Info@RosenbergerAG.com www.RosenbergerAG.com